



## **BARDEHLE PAGENBERG Team**

### **Thomas Schäfer**

Dipl.-Inf.



**European Patent Attorney, Senior Associate**

Location Munich

Languages: German, English

**+49 89 928 05-0**

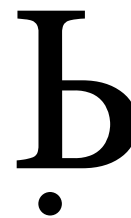
**[thomas.schaefer@bardehle.de](mailto:thomas.schaefer@bardehle.de)**



Thomas Schäfer is a computer scientist with many years' experience working in the patent department of a major German industrial company where he has acquired broad experience, particularly with regard to the prosecution of patents in the fields of telecommunications and information technology.

With his technical qualification, Thomas Schäfer has acquired expertise in all aspects of computer-implemented inventions.

His main areas of practice as a European Patent Attorney include patent prosecution, opposition and appeal proceedings, and infringement and nullity actions.

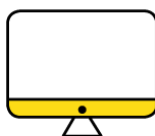


## Domaines Juridiques

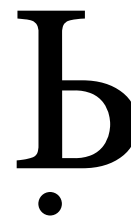
Patent Prosecution

Unitary Patent

## Secteurs industriels



Software, IT & Computer Technology



## Curriculum vitae

- 2017 - aujourd'hui** European Patent Attorney at BARDEHLE PAGENBERG, Munich, Germany
- 2017** Licensed to practice as a European Patent Attorney
- 2013 - 2017** Patent Engineer at BARDEHLE PAGENBERG, Munich, Germany
- 2012 - 2013** Patent Engineer at Horn Kleimann Waitzhofer, Munich, Germany
- 2005 - 2012** Patent Engineer at Siemens / Nokia Siemens Networks, Munich, Germany
- 2000 - 2004** Teaching fellow at the Max Planck Institute for Information and Saarland University, Saarbrücken, Germany
- 1994 - 2000** Degree in Computer Science (Dipl.-Inf.) at the University of Bremen, Germany